



Approved SCOM Health Check Report

Installation Guide

Date: 2015-04-01
Version: 1

Table of Contents

- Introduction2
- Summary.....2
- Intended audience2
- Change log2
- Overview3
- Implementation4
- Download and install the Report Management Pack4
- Create a Service Account for accessing data in the SCOM database5
- Configure a Data Source connection to the SCOM database7

Introduction

Summary

This document provides guidelines for installing and configuring the Approved SCOM Health Check Report.

The report provides a comprehensive health summary of your SCOM environment. All metrics that are crucial for a healthy SCOM environment are collected and reported in a single dashboard so you can get a quick overview of the current status.

Intended audience

This document is intended for the SCOM staff.

Change log

Version	Date	Changed by	Changes
1	2015-04-01	Johan Möller	Original version

Overview

Implementing the Health Check Report in your environment is easy. Just perform the following steps and you are ready to go.

1. Download and install the Report Management Pack
2. Create a Service Account for accessing data in the SCOM database
3. Configure a Data Source connection to the SCOM database

All these steps are outlined in detail in the next chapter.

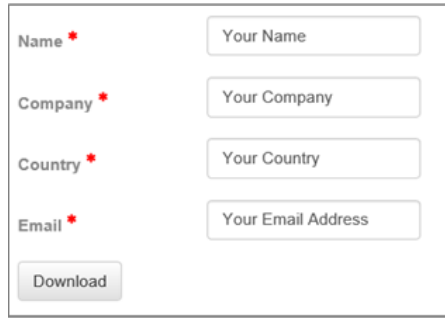
Please note that you must be logged on as an **Operations Manager Administrator**, **SQL Server Administrator** and **Reporting Services Administrator** when installing and configuring the report.

Implementation

Download and install the Report Management Pack

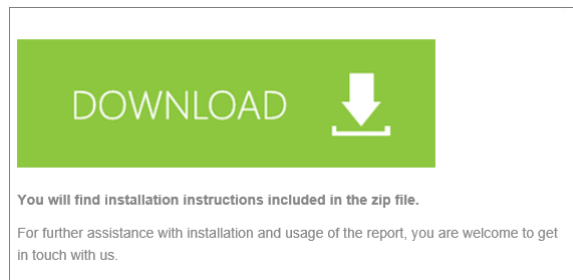
The Community Edition of the report is available free of charge from Approved.

- Go to www.approvedconsulting.com/downloads and click on **Download Now!** under **Operations Manager Health Check Report**.
- Fill in your name, company, country and e-mail address and click on the **Download** button:



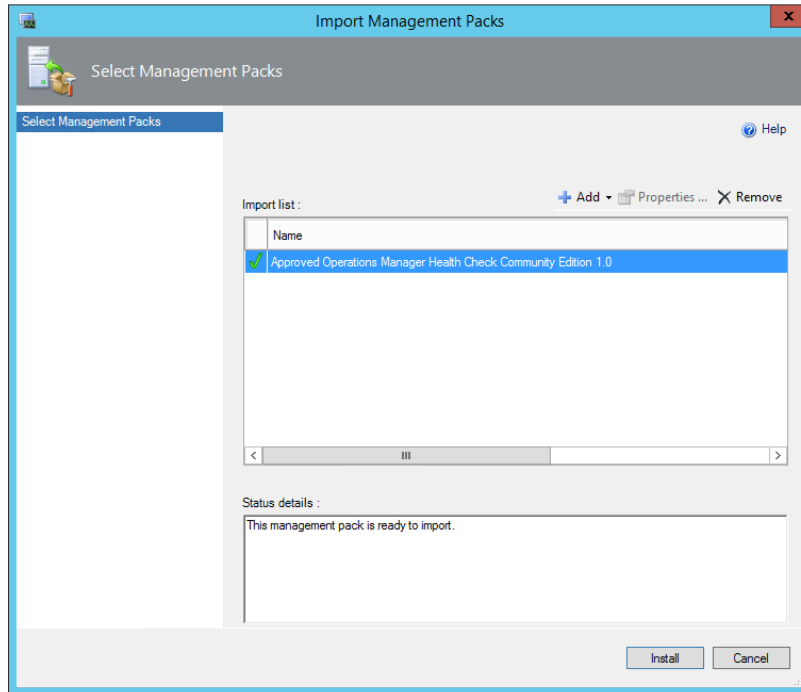
A registration form with four input fields and a download button. The fields are labeled 'Name *', 'Company *', 'Country *', and 'Email *', each with a red asterisk. The input boxes contain placeholder text: 'Your Name', 'Your Company', 'Your Country', and 'Your Email Address'. A 'Download' button is located at the bottom left of the form.

- In the next dialogue click **Download**:



- Save the zip file in a folder on your SCOM server (or a workstation running the SCOM Operations Console), and extract the **Approved.OpsMgr.HealthCheck.CE.X.x.mpb** file.

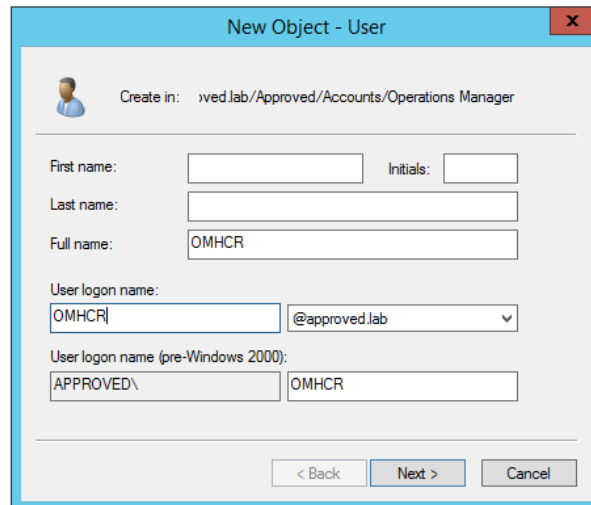
- In the **Operations Console** go to **Administration -> Management Packs** and import the management pack bundle (mpb) file:



Create a Service Account for accessing data in the SCOM database

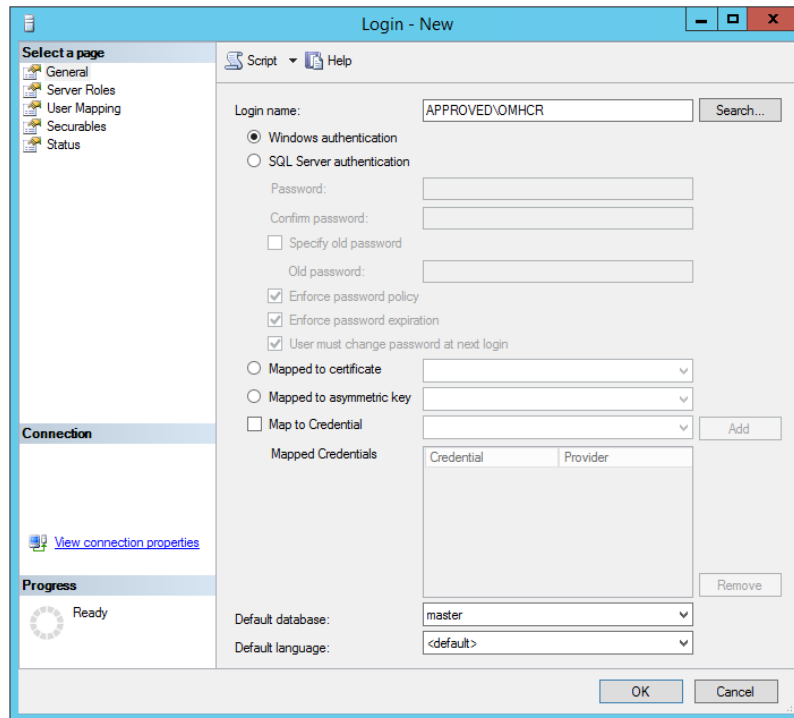
The service account will be used for retrieving data that is required by the report. It will only have read access to the database (*db_datareader* permissions) and view permissions on the database state.

- In **Active Directory Users and Computers** create a user account for the SCOM Health Check Report, for instance **OMHCR**:

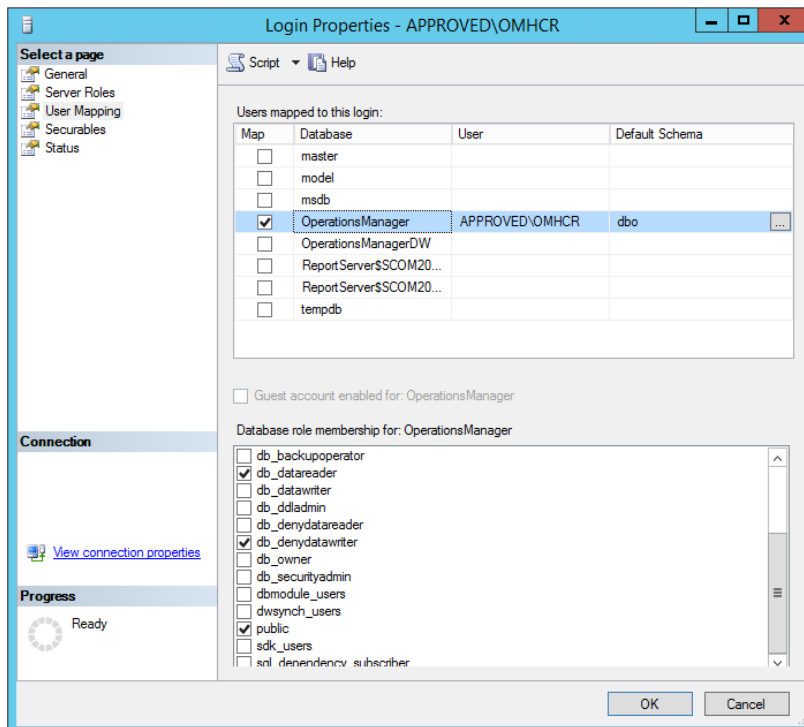


- Fill in a password, disable the **User must change password at next logon** option and set the **Password never expires** option.

- In **SQL Server Management Studio** connect to the <Server>\<Instance> that is holding the SCOM Operational Database and go to **Security -> Logins**.
- Add a new Login using the previously created Active Directory account.
Note: Remember to select **Entire Directory** as **Location** when searching for the account.



- Under **User Mapping** select the **OperationsManager** database and add the **db_datareader** and **db_denydatawriter** roles (**public** will already be assigned):



- Click **OK** to save the new Login.
- Back in the **SQL Server Management Studio** create a **New Query** and enter the following commands:

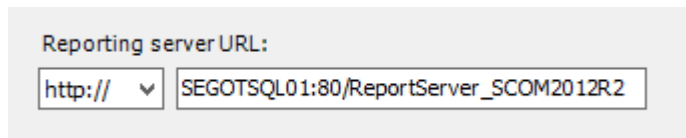
```
Use OperationsManager
Go
Grant View Database state to [<DOMAIN>\<Health Check Report Account>]
```

Replace **<DOMAIN>\<Health Check Report Account>** with your domain and account, for instance [APPROVED\OMHCR] . **Note:** Keep the surrounding brackets [].

- **Execute** the query and verify that the commands completed successfully.

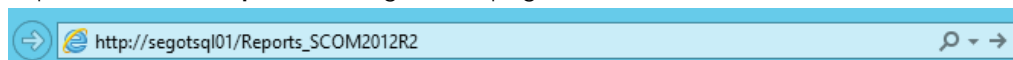
Configure a Data Source connection to the SCOM database

- In the **Operations Console** go to **Administration -> Settings**, right-click **Reporting**, select **Properties** and copy the Reporting Server URL. For example:



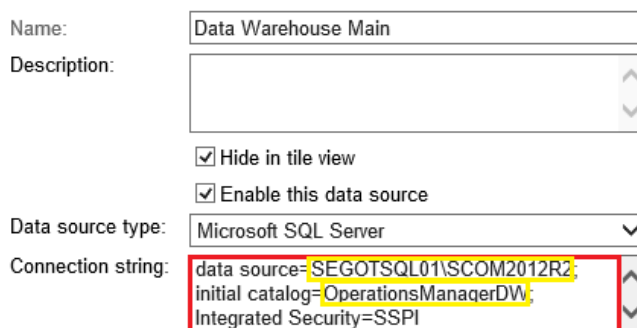
Reporting server URL:

- Start a web browser, paste the URL, add **http://** at the beginning of the line, change ReportServer_... to **Reports_...** and go to the page:



http://segotsql01/Reports_SCOM2012R2

- In the **SQL Server Reporting Services Home** page click **Details View** in the upper right corner.
- Locate the data source **Data Warehouse Main** (it will be at the bottom of the list), open it and copy all content in the **Connecting string** field:



Name: Data Warehouse Main
 Description:
 Hide in tile view
 Enable this data source
 Data source type: Microsoft SQL Server
 Connection string: data source=SEGOTSQL01\SCOM2012R2;
 initial catalog=OperationsManagerDW;
 Integrated Security=SSPI

The string will look like:

```
data source=<Server>\<DataWarehouseInstance>;initial
catalog=<OperationsManagerDW>;Integrated Security=SSPI
```

- Go back to the **SQL Server Reporting Services Home** page (click on the **Home** link in the upper left corner) and in the toolbar click **New Data Source**.

- Name the new data source **Operational Database Main** and paste the connection string from the previously copied data source in the **Connection string** field. Replace the <Server>\<DataWarehouseInstance> with <Server>\<OperationalDatabaseInstance> and OperationsManagerDW with **OperationsManager**.

Note: You only have to change the server name (<Server>) if the SCOM database instances are stored on different SQL servers. Normally they are stored on the same server.

The string should now look like:

```
data source=<Server>\<OperationalDatabaseInstance>;initial
catalog=OperationsManager;Integrated Security=SSPI
```

- Select **Credentials stored securely in the report server** and fill in the credentials for the service account that was created in the previous section.
- Make sure that the **Use as Windows credentials when connecting to the data source** option is selected:

Name:

Description:

Hide in tile view

Enable this data source

Data source type:

Connection string:

Connect using:

Credentials supplied by the user running the report

Display the following text to prompt user for a user name and password:

Use as Windows credentials when connecting to the data source

Credentials stored securely in the report server

User name:

Password:

Use as Windows credentials when connecting to the data source

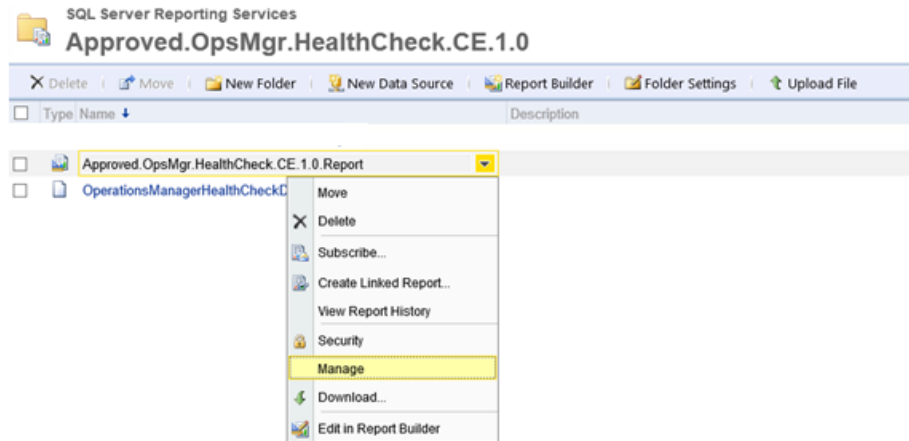
Impersonate the authenticated user after a connection has been made to the data source

Windows integrated security

Credentials are not required

- Finally, click **Test connection** and verify that the connection was created successfully.
- Click **OK** to go back to the **SQL Server Reporting Services Home** page.

- Open the folder **Approved.OpsMgr.HealthCheck.CE.X.x**, hover the mouse over the **Approved.OpsMgr.HealthCheck.CE.X.x.Report** and select **Manage** in the drop down list:



- In the left pane select **Data Sources**.
- Under **OperationsManager** select **A shared data source**, click **Browse** and select the previously created data source (**Operational DataBase Main**) and click **OK**.
- Under **DataWarehouseMain** select **A shared data source**, click **Browse** and select the original data source (**Data Warehouse Main**) and click **OK**.
- Click **Apply**.
- In the left pane select **Processing Options**.
- Select **Always run this report with the most recent data** and then **Cache a temporary copy of the report. Expire copy of report on the following schedule...**
- Click **Configure** and set a **Daily Schedule** on **Every weekday** at **06:00 AM**:

Use this schedule to specify a date and time to expire a cached report.

Schedule details

Schedule an expiration date and time for this cached report that coincides with how often the data is updated in the data source.

All times are expressed in (GMT +02:00) W. Europe Daylight Time.

Hour
 Day
 Week
 Month
 Once

Daily Schedule

On the following days:
 Sun Mon Tue Wed Thu Fri Sat

Every weekday
 Repeat after this number of days:

Start time: : A.M. P.M.

- Click **OK** and then close the **SQL Server reporting Services** web page.
- The report will now be available in the **Operations Console** under **Reporting** -> **Approved Operations Manager Health Check Community Edition X.x**